



Events at Seed // 2022

NOT JUST A PRETTY SPACE

Seed is an inclusive coworking and events space in Glebe that is built around the idea of **business as a force for good**.

With community being a core pillar of the Seed mission, we figure it only makes sense to allow our Seed space to serve the community as an events locale—whether you're hosting a meeting, running a fashion show, or celebrating a book launch.

Located in the heart of Sydney, we are only a 10 minute drive from the CBD. Our central location makes Seed a convenient touchstone regardless of where your guests are coming from.

As with everything we do, ambience is at the top of mind. Our beautiful space is bright, welcoming, and spacious. You don't have to worry about your event feeling cluttered, and our minimalist design is the perfect backdrop no matter how simplistic or ornate your taste may be.





At a glance

The Rooms

Range of Room Sizes to
Suit Any Event

Aesthetic Space Full of Plants

Abundant Natural Light

Natural Finishes Throughout

Climate Positive Footprint

The Amenities

Catering Available
Upon Request

Dog Friendly

Air Conditioning

Circadian Rhythm Lighting

Recycling, Including Soft
Plastics and Organic
Waste Bins

The Tech

High Speed Wifi

Audio Visual Technology

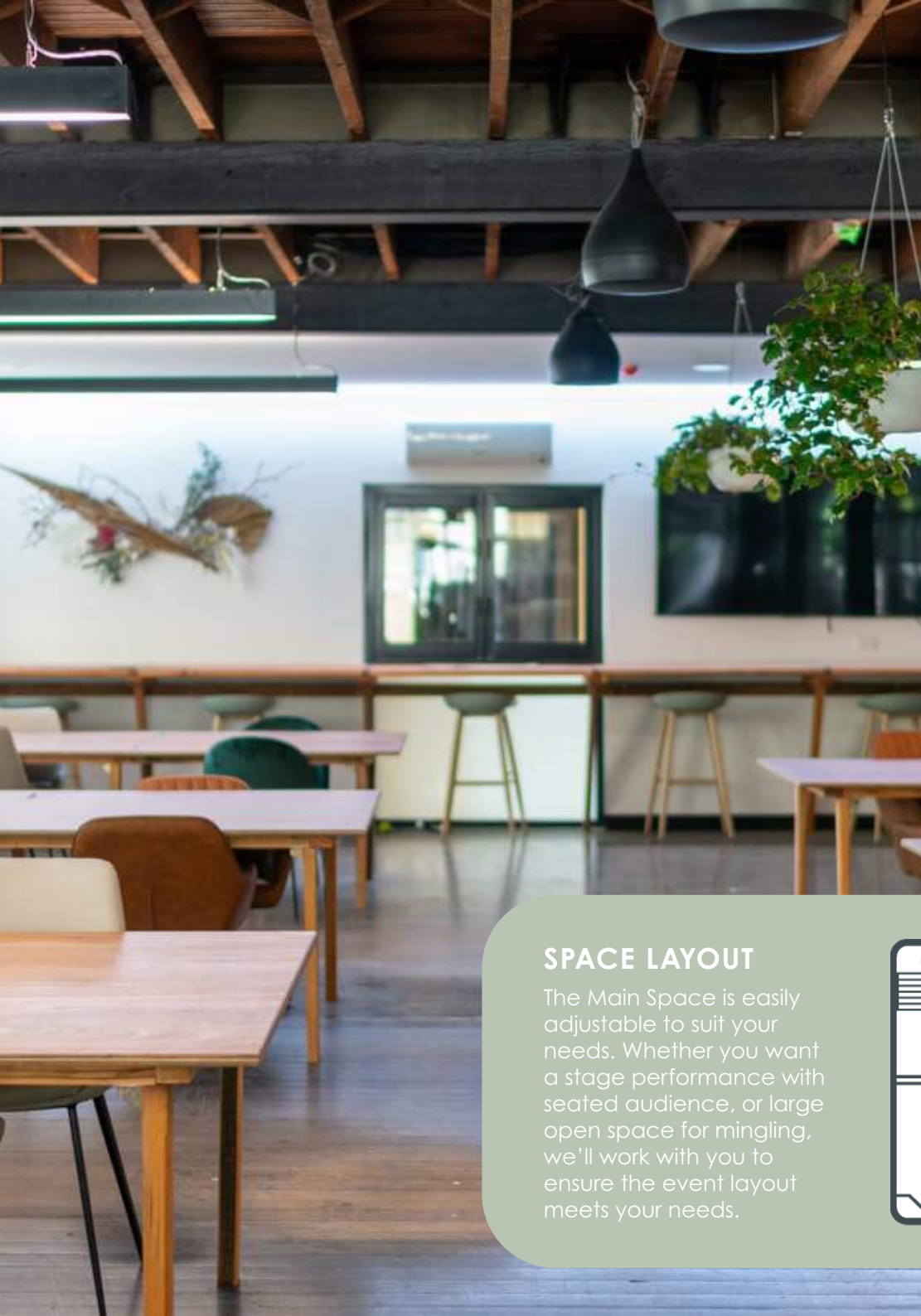
Getting Here

Easy to Reach By
Public Transport

Close to Sydney CBD
(Central Business District)

Bike Storage





The Main Space

The space to choose when you want to draw a crowd, our Main Space has hosted a whole slew of events from fashion shows to comedy nights and everything in between. Will your event be next?

The Main Space is a large, open room — ideal for bigger gatherings or exhibitions. With a capacity of up to 80 guests, The Main Space allows you to make the most of maximum exposure.

FEATURES

- Full A/V setup (including wireless microphone)
- Live Streaming available
- 75" presentation screen
- Hi – Speed Wifi
- Dishwasher and Fridge
- Coffee / Tea facilities

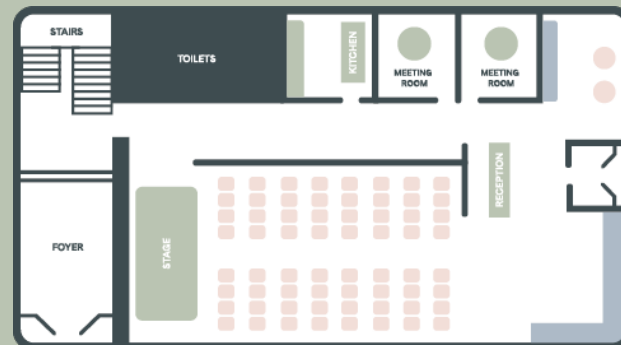
\$2,000 half day

\$3,000 full day

*Discounts available to sustainability events, partners and NFP's.

SPACE LAYOUT

The Main Space is easily adjustable to suit your needs. Whether you want a stage performance with seated audience, or large open space for mingling, we'll work with you to ensure the event layout meets your needs.



STAGE	up to 60 guests
SEATED	up to 35 guests
STANDING	up to 80 guests
MIXED	up to 60 guests



The Workshop Space

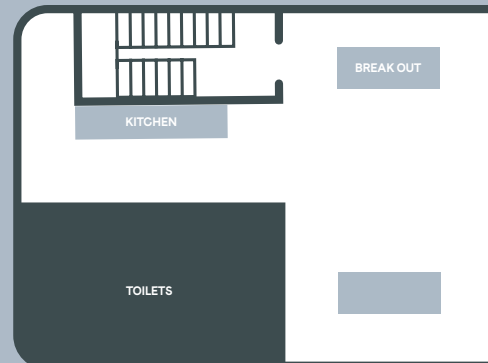
The Workshop Space is the place to go when you need to get it done. With a capacity of up to 16 guests, the space is perfect for professional settings including meetings, workshops, and small networking events.

FEATURES

- 65" presentation tv
- Coffee / Tea facilities
- Hi – Speed wifi
- boardroom style table
- additional high tables

FROM
\$150/HR*

*Discounts available to sustainability events, partners and NFP's.



SPACE LAYOUT

Our boardroom is complete with everything you'd expect from a corporate boardroom, without the stuffy feeling. A 65" presentation TV allows you to video-conference and present easily, while the boardroom-style table is perfect for facilitating discussion for groups large and small alike.

CAPACITY up to 16 guests



The Boardroom

The Boardroom is a light filled room perfect for meetings or planning sessions for your team. Often used by companies looking to bring remote teams together for the day there is plenty of room to get things done.

FEATURES

- 65" presentation tv
- Coffee / Tea facilities
- Hi – Speed wifi
- 10 person boardroom table
- printer

FROM
\$125/HR*

*Discounts available to sustainability events, partners and NFP's.

Our boardroom is complete with everything you'd expect from a corporate boardroom, without the stuffy feeling.

A 65" presentation TV allows you to video conference and present easily, while the boardroom-style table is perfect for facilitating discussion for groups large and small alike.

CAPACITY up to 16 guests

Catering Options

Whether you're working hard or playing hard, it's inevitable that you'll build up an appetite. For those times when you really want to buckle-down with your team, or wow your guests with something sweet, we can help connect you to a wide range of catering options.

As part of our commitment to minimise waste, we always provide plates, cutlery and glassware. Plus, we're firm believers that the less you have to stress about, the more confident you can feel while hosting. Let us handle the messy bits.

CAKES & HIGH TEA

- Petit fours
- Finger sandwiches
- Selection of herbal and caffeinated teas

GRAZING STATION

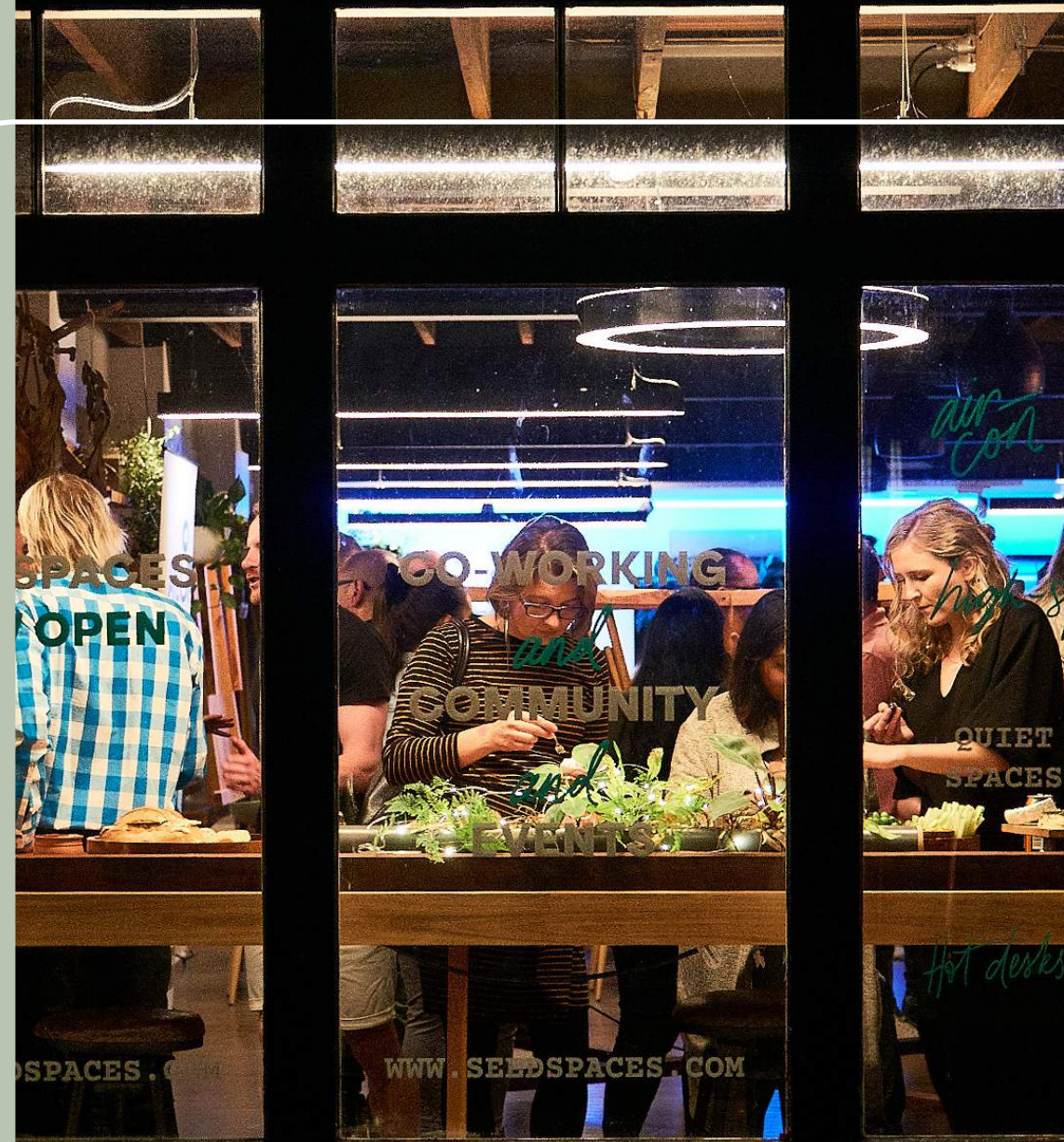
- Cheese & Bikkies
- Veggies & Dips
- Charcuterie

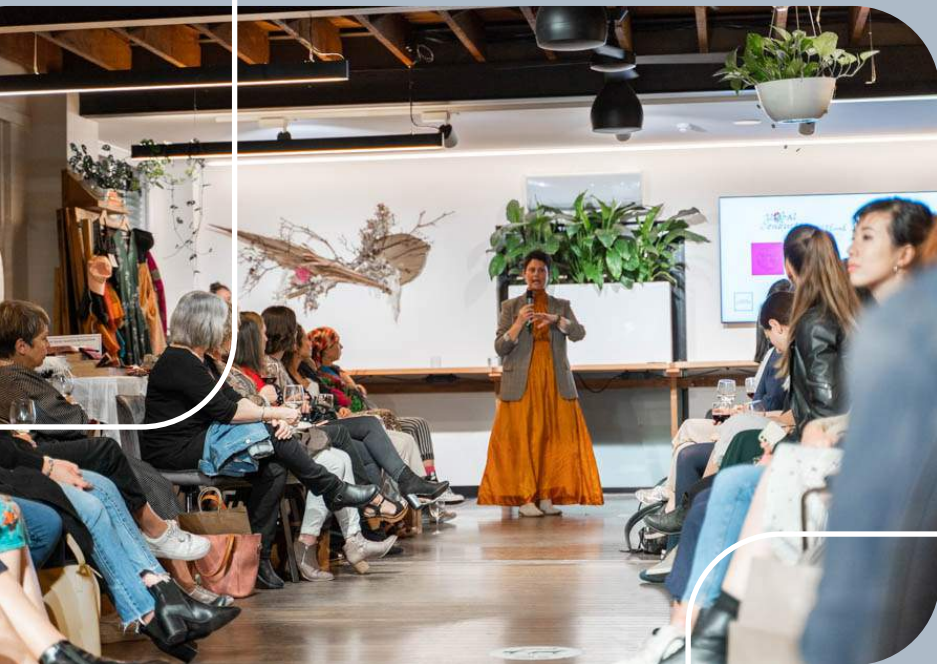
DINNER

- Range of Cuisines
- Set Menus & Selected Catering Packs
- Formal Seated Dining & Casual Hors D'Oeuvres

CANAPES

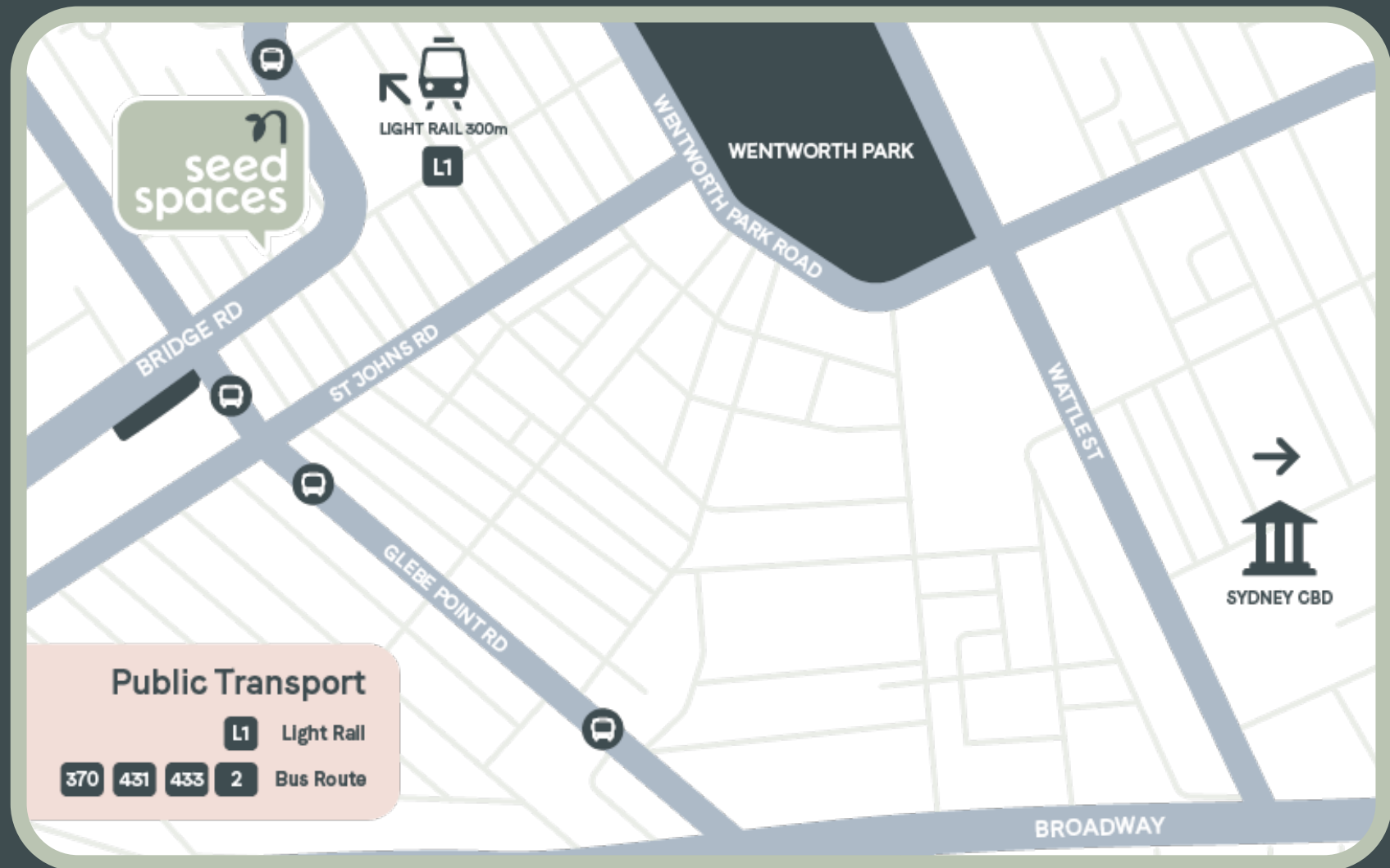
- Restaurant-Quality Nibbles
- Sweet & Savoury Bites
- Ability to Cater for Dietary Needs





Past Events

Getting Here



137-141 Bridge Rd, Glebe NSW 2037

Book a Tour: 02 8014 4299

To begin planning your next big event,
email us: grow@seedspaces.com

